

VINNOE10VET
Slim, Compact, Affordable



VINNO Technology (Suzhou) Co., Ltd.

5F, A Building, No.27 Xinfra Rd, Suzhou Industrial Park, 215123, China

Tel: +86 512 62873806

Fax: +86 512 62873801

Email: vinno@vinno.com

Website: www.vinno.com

VINNO reserve the rights to revise the technical specification if needed.

VINNO
VISION IN INNOVATION

Advanced Technology and Complete Solution

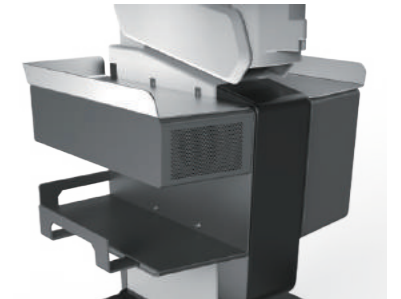
Combined with exquisite design, value added performance, professional veterinary software, VINNO E10 VET is ideal for all aspects of veterinary application with budget constrains in mind.

- » Advanced Imaging Technology
 - VFusion
 - VSpeckle
 - VTissue(optional)
 - Pulse Inversion Harmonic
 - Tview
 - Pview(optional)
- » Streamlined Workflow
 - Touch Panel
 - Auto Optimization
 - Auto IMT
 - Auto PW/CW trace
- » Professional Veterinary Patient Management
 - Veterinary Preset
 - Onboard Veterinary Report
- » Easy Image Management
 - Intergrated 250G Harddisk
 - Bluetooth/WiFi/LAN connectivity

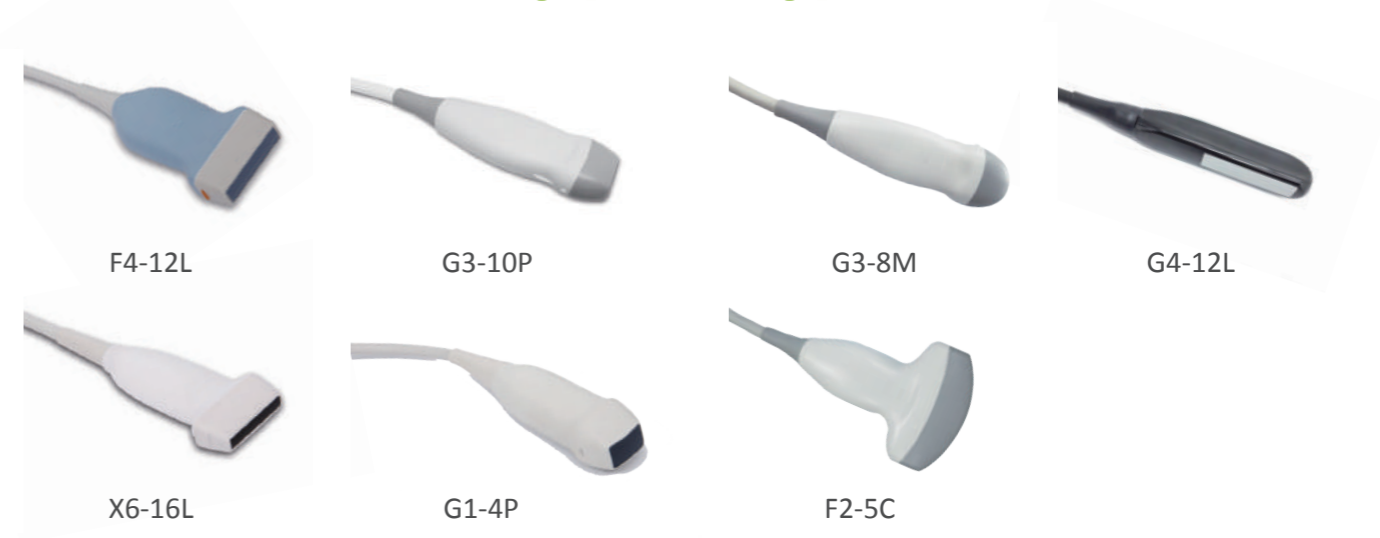


Ergonomic Design and Smart Workflow

- » 19 inch professional LED monitor gives you more clear view
- » 10 inch smart touch panel enables the operation more convenience
- » pinless and flat probe connection make you more comfortable
- » 500G HDD (big enough for volume data storage)
- » B / W video printer slot



Versatile veterinary probe type



VINNOE20VET

Slender, Smart, Super



VINNO Technology (Suzhou) Co., Ltd.

5F, A Building, No.27 Xinfra Rd, Suzhou Industrial Park, 215123, China

Tel: +86 512 62873806

Fax: +86 512 62873801

Email: vinno@vinno.com

Website: www.vinno.com

VINNO reserve the rights to revise the technical specification if needed.

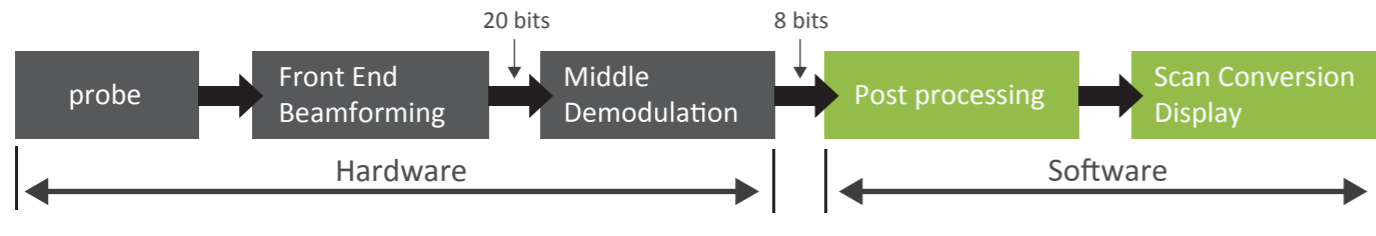
VINNO
VISION IN INNOVATION

VINNO20 VET is fully featured in a slender and compact solution. Its super performance and mobility fits in most modern, small or mixed veterinary clinics, research laboratories and school.

Innovative Platform, Crystal Image Quality

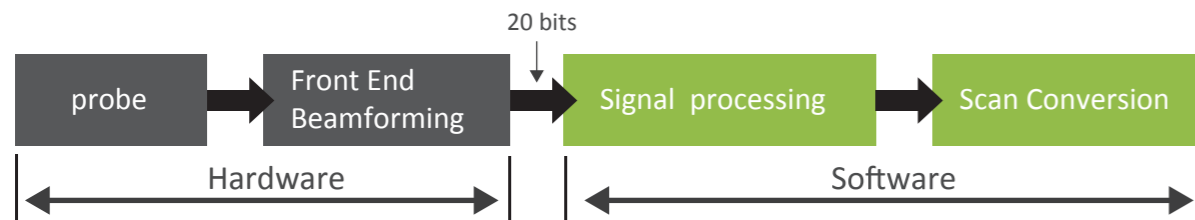
Innovative RF Ultrasound Platform.

» Traditional Ultrasound Platform. Image data processing Platform.



» VINNO Innovative RF Ultrasound Platform.

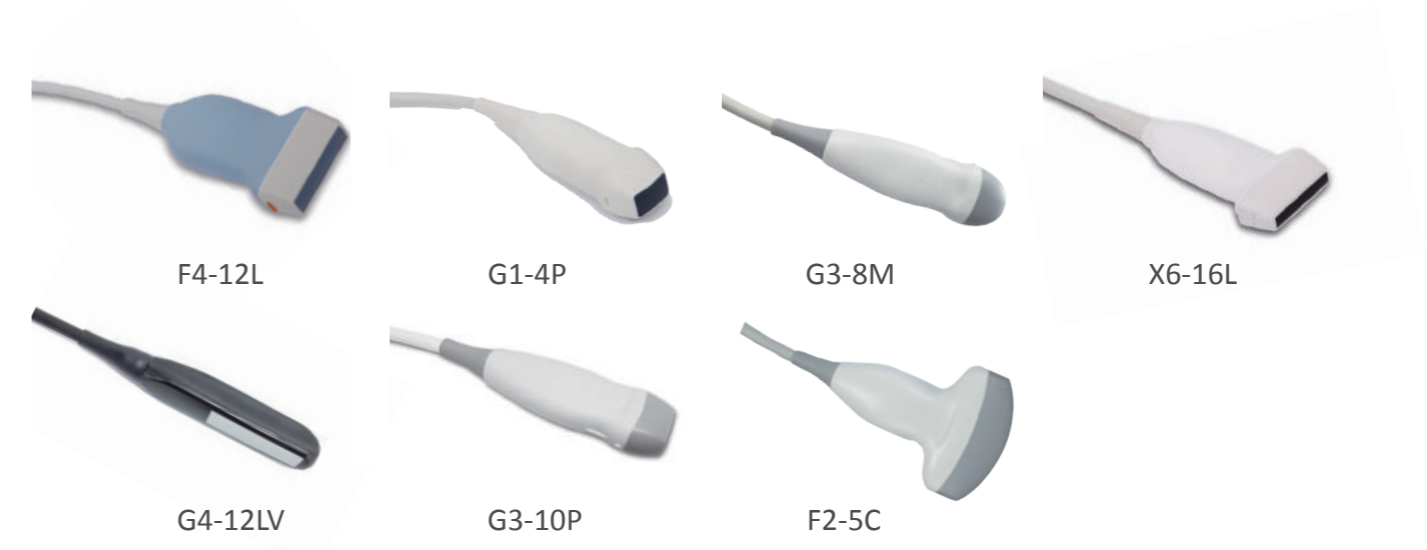
RF signal data processing platform for better resolution and definition.



- ✓ Bigger data to compute for better image quality
- ✓ Processing algorithm based on signal data, not image data
- ✓ Non-linear demodulation to strong signal
- ✓ Flexible algorithm on data processing
- ✓ More accurate and higher step calculation

- » Advanced Imaging Technology
 - VFusion/VSpeckle/VTissue/Pulse Inversion Harmonic
- » More Cardiac Features Option
 - CW/TVI/TVM/Color M/AMA
- » Various Useful Tools
 - Easy Compare/RF-based Zoom/Full Screen/Tview/Pview/Needle Enhancement

Wide Bandwidth Veterinary Probe



Dedicated Veterinary Software Package

- » Veterinary Patient Data
- » Veterinary Body Marks
- » Veterinary Measurements and Reports

Ergonomic Design and Efficient Workflow

19 inch LED Screen

Touch Screen Operation

Silent

Bluetooth

500G hardware